

ARP ESSER III



ARP ESSER III Overview

Mabank ISD is allocated \$7.5M in funding to use through September 2024. At least 20% of those funds must be used to address learning loss.

1

Allocation: \$7.5million

- 2/3 (\$5M) June of 2021
- 1/3 (\$2.5M) January of 2022
- One-time funds

2

Timeline: 3/13/20 -9/30/24

- Supplanting allowed with restrictions

3

Use: 20%+ on Learning Loss

- Evidence-based interventions (tutorials and summer learning)
- Address academic + social-emotional impact of pandemic on our students

Mabank ISD Planning Process Requirements

MISD leadership will meet with the ESSER committee to create a plan that is linked to the TEA requirements and guided by stakeholder input.

Stakeholder Input

- Survey (Spring '21 ESSER III Stakeholder Survey)
- District/Community Committee Sign-up Form
- ESSER III District/Community members meeting (6/24/2021)
- Website for ongoing transparency and additional community input on plans
- ESSER III District/Community members meeting (1/20/2022)
- ESSER III District/Community members meeting (7/25/2022)

ARP ESSER III Priorities

Academic Supports

- Summer learning and tutorials
- Assessments and curricular materials
- Educational technology
- Support for student groups disproportionately impacted by Covid

Social-Emotional Supports

- Mental health services
- Family engagement

Health/Safety

- Campus preparedness to mitigate Covid spread (PPE, ventilation)
- Coordination with other agencies to prevent and respond to Covid-19

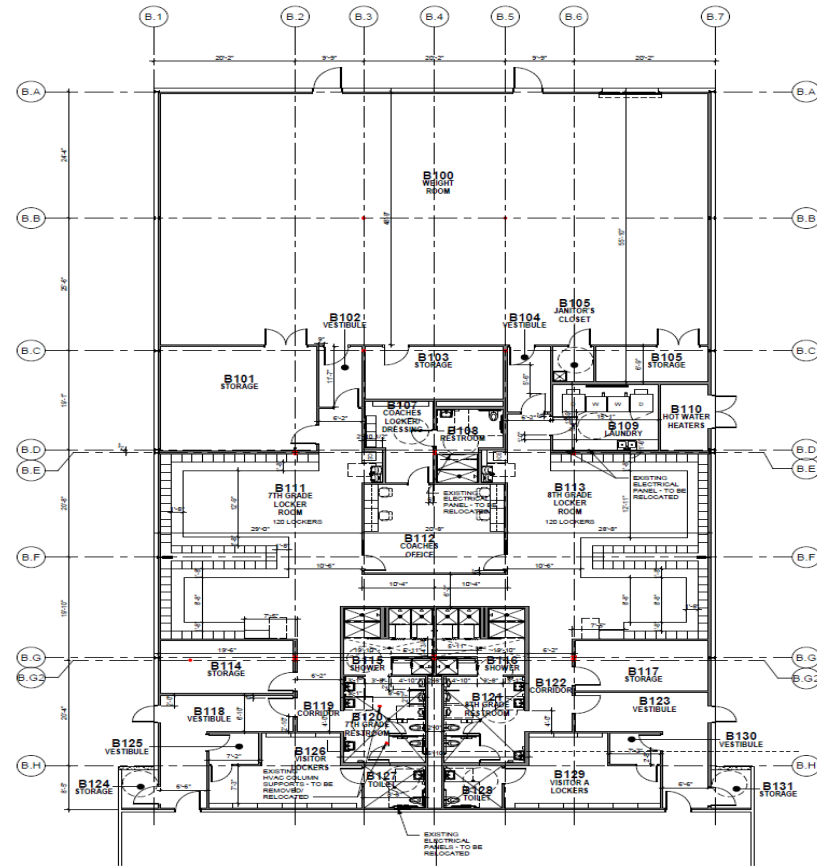
Continuity of Services

- Maintain district services, including continuing to employ existing staff

Areas of Focus

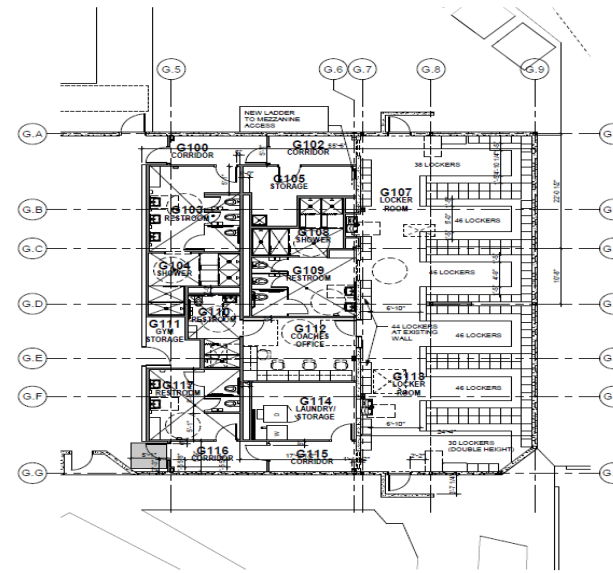
- Projects that have evolved from discussions with the various stakeholders and parent surveys

Junior High Locker Rooms



1 BOY'S LOCKER ROOM - FLOOR PLAN
SCALE: 1/8" = 1'-0"

BOY'S LOCKER ROOM:
TOTAL EXISTING AREA: 21,315 SQUARE FEET
TOTAL RENOVATED AREA: 11,239 SQUARE FEET
LOCKER COUNT: 240 LOCKERS (DOUBLE HEIGHT)



2 GIRL'S LOCKER ROOM - FLOOR PLAN
SCALE: 1/8" = 1'-0"

GIRL'S LOCKER ROOM:
TOTAL EXISTING AREA: 10,283 SQUARE FEET
TOTAL RENOVATED AREA: 3,656 SQUARE FEET
LOCKER COUNT: 296 LOCKERS (DOUBLE HEIGHT)

ESSER III Budget Summary

Payroll Costs	6100	\$1,556,595
Professional and Contracted Services – Possible Amendment	6200	\$991,701
Supplies and Material	6300	\$1,006,000
Other Operating Costs	6400	
Debt Services	6500	
Capital Outlay – Possible Amendment	6600	\$3,061,394
Operating Transfers Out	8911	
Total Direct Costs		\$6,615,690
Indirect Costs		\$979,439
Total Funds		\$7,595,129

Payroll Costs (6100):
 Instructional Coaches
 Counselor IS/JH
 Police Officer
 Teachers from ESSER II

Supplies and Materials (6300):
 Instructional Materials and Technology
 Needs

Capital Outlay (6600): **Amendment**
Add approximately \$800,000 from
Professional and Contracted Services
 Junior High Locker Rooms

Indirect Costs:
 \$652,689 General Budget
 \$326,750 (PA Systems for Elementary
 Schools, Awnings for Southside, Lakeview,
 and back of Central, Playgrounds, and
 Outdoor Learning Spaces)

ESSER III Budget Summary for the 21-22 SY

Payroll Costs – Learning Loss Positions/Summer Learning	6100	289,452.95
Professional and Contracted Services	6200	
Supplies and Material – Learning Loss	6300	\$90,000
Other Operating Costs	6400	
Debt Services	6500	
Capital Outlay	6600	
Operating Transfers Out	8911	
Total Direct Costs		\$379,452.95
Indirect Costs		\$10,000
Total Funds		\$389,452.95

Payroll Costs (6100):
 Instructional Coaches
 Counselor IS/JH
 Police Officer
 Teachers from ESSER II
 Summer Learning Salaries

Supplies and Materials (6300):
 Instructional Materials and Technology
 Needs

Capital Outlay (6600):
 Junior High Locker Rooms

Indirect Costs:
 \$652,689 General Budget
 \$326,750 (PA Systems for Elementary
 Schools, Awnings for Southside, Lakeview,
 and back of Central, Playgrounds, and
 Outdoor Learning Spaces)

Mabank ISD ESSER III Requirements

To receive its ESSER allotment, MISD must have two written plans, along with evidence of meaningful community engagement.

1. Written Plans

- Use of Funds Plan
- Safe Return to In-Person Instruction and Continuity of Services Plan
 - *Both plans are posted on MISD website*

2. Community Consultation

- Meaningful input from a wide variety of stakeholders
 - *Conducting via committee meetings and surveys*



Questions

